

PROSPECTUS

2024



GLOBAL EDUCATION FOR GLOBAL CHANGE



CONTENTS

Page 3: Message from our Director of Studies
[Dr. Huhana Forsyth]

Page 4: Why study in New Zealand ?

Page 5: About ATMC NZ

Page 6: ATMC NZ Facilities & Campus

Page 7: Courses at ATMC NZ

Page 8: Bachelor of Applied Management

Page 10: Bachelor of Applied Arts
[Film Production]

Page 12: Bachelor of Applied Arts
[Digital Media Production]

Page 14: Diploma in Software Development
[Level 7]

Page 16: New Zealand Diploma in Management
[Health Care] [Level 7]

Page 18: How to apply to study at ATMC NZ
[International]

Page 18: How to apply to study at ATMC NZ
[Domestic]

Page 19: Applying through Study Link

Page 19: [Other] Important Information



MESSAGE FROM OUR DIRECTOR OF STUDIES



Kia ora, Welcome to ATMC New Zealand.

As the Director of Studies at ATMC New Zealand, I strongly believe in the power of education, and I am proud of the rich tradition we have developed for providing practical and experiential learning.

At ATMC New Zealand we are committed to helping our students become highly employable and sought after by industry. We do this by developing their communication, collaboration, critical thinking, and creativity skills in addition to the skills and knowledge required for their chosen profession.

03

At ATMC New Zealand you will find energy, vitality, enthusiasm, and excitement about the future. We seek students who share these qualities to help us create that future together.

At ATMC New Zealand our aim is to provide you with practical, experience-base training and development and to prepare you for a meaningful and successful career.

We do this by offering a suite of programmes which reflect current industry practice, and providing you with the ability to apply and practice what you learn using real case studies and examples. At ATMC New Zealand you are provided with the opportunity to develop new skills and knowledge in your chosen field and to meet industry professionals through a programme of guest speakers and industry visits.

Our programmes are delivered by facilitators with industry, teaching and research experience and who are passionate about making a positive difference in the lives of their students. Their role is to support you in your study journey and prepare you for the workplace.

Research at ATMC New Zealand is critical to supporting the curriculum, developing new knowledge and understanding, and ensuring that what is taught is both current and future focused. ATMC New Zealand undertakes research in the areas of business, management, information technology, healthcare and the arts.

We understand the many challenges that international students face when they live, work and study abroad and it is our aim to ensure that all our students feel safe and secure. In addition to providing academic support and guidance, ATMC New Zealand prides itself on providing opportunities for students to make friends through social gatherings and college events.

I wish you the best for your studies and look forward to seeing you graduate.

Ngā mihi nui

Dr Huhana Forsyth

So WHY NEW ZEALAND?

O Mātau Matakite – Inspiring world changers through education (No te mātauranga te hurihanga o te ao)

New Zealand's indigenous people are known as Tangata Whenua, or people of the land. They are commonly referred to as Māori.

Māori culture is respected and Māori knowledge and teaching/learning approaches are embedded in all ATMC NZ programs.

Aotearoa, the land of the long white cloud, thrives with vibrant cultures, encapsulating the essence of manaakitanga—warm hospitality. Kiwis, a harmonious blend of Māori and Pākehā, embody aroha—deep love and compassion. With kaitiakitanga—guardianship, they preserve the pristine beauty of their land.

The proverb "He aha te mea nui o te ao? He tangata, he tangata, he tangata" underscores their belief that people are the most precious treasure, emphasizing the value of community and interconnectedness.

In New Zealand, diverse traditions coalesce, fostering a unique identity where hai tangata, hai tangata, hai tangata—people matter most.

Haere mai!

The world-class education system, steeped in kaitiakitanga (guardianship), provides a safe, nurturing space for learning.

Here, students gain not just knowledge but also an enriching cultural experience. With an abundance of natural wonders, New Zealand invites students to explore, learn, and create lifelong memories.

Come, experience the wairua—spirit, and leave with enduring connections and knowledge.

WHY SHOULD YOU STUDY IN NEW ZEALAND ?

Haere mai ki Aotearoa, where manaakitanga, the spirit of warm hospitality, embraces all. Kiwis, with their whanaungatanga, foster close-knit relationships.

The diverse cultures create an inclusive, supportive environment for international students, enhancing their whakapapa, or sense of belonging.

ATMC AOTEAROA NEW ZEALAND

ATMC NZ Courses meet students' needs-we are a NZQA registered tertiary institute offering academic and practical qualifications to suit your needs.

At ATMC Aotearoa NZ we are committed to helping our students become highly employable and sought after by industry. We do this by developing their communication, collaboration, critical thinking, and creativity skills in addition to the skills and knowledge required for their chosen profession.

At ATMC Aotearoa New Zealand you will find energy, vitality, enthusiasm, and excitement about the future. We seek students who share these qualities to help us create that future together.

Nurturing to the code of practice 2021, ATMC Aotearoa New Zealand has in-house support including the below,

- Multicultural & Multilingual - our staff members come from a variety of backgrounds.
- 24/7 Student Support
- Stay, Support and Welfare
- Guidance on Mental Health and Well-being
- Job search Centre – Employment support service helps find students jobs whilst they are studying and after they have completed studies
- Experienced and qualified staff-both practical and academic and all are prepared to do the extra hours to help you
- Support-we come from a variety of countries ourselves so we understand any difficulties you might face and can usually provide support in your own language

OUR VISION

O Mātau Matakite – Inspiring world changers through education (No te mātauranga te hurihanga o te ao)

OUR MISSION

Ō Mātau Whakatakaka – World class education delivering success for life and social impact (Te mātauranga nui o te ao ka whakatake te piki ora)

05

OUR VALUES

Ō Mātau Uara – Wisdom, Passion, Connectedness, Heart (Mātauranga, Aroha, Hononga, Ngākau)

OUR ACADEMIC PHILOSOPHY

Ō Mātau Ohia Akoranga – To nurture people through wisdom, passion, connectedness, and heart (Kia hapaitia te tangata no te mātauranga, te aroha, te hononga, me te ngakau)

ATMC AOTEAROA NEW ZEALAND

FACILITIES | RESOURCES & CAMPUS

The ATMC NZ Auckland campus in the CBD is large and modern with up to date equipment and facilities for students. We have a library, student cafeteria, prayer room and safe room on site. Walking distance to all public transport.

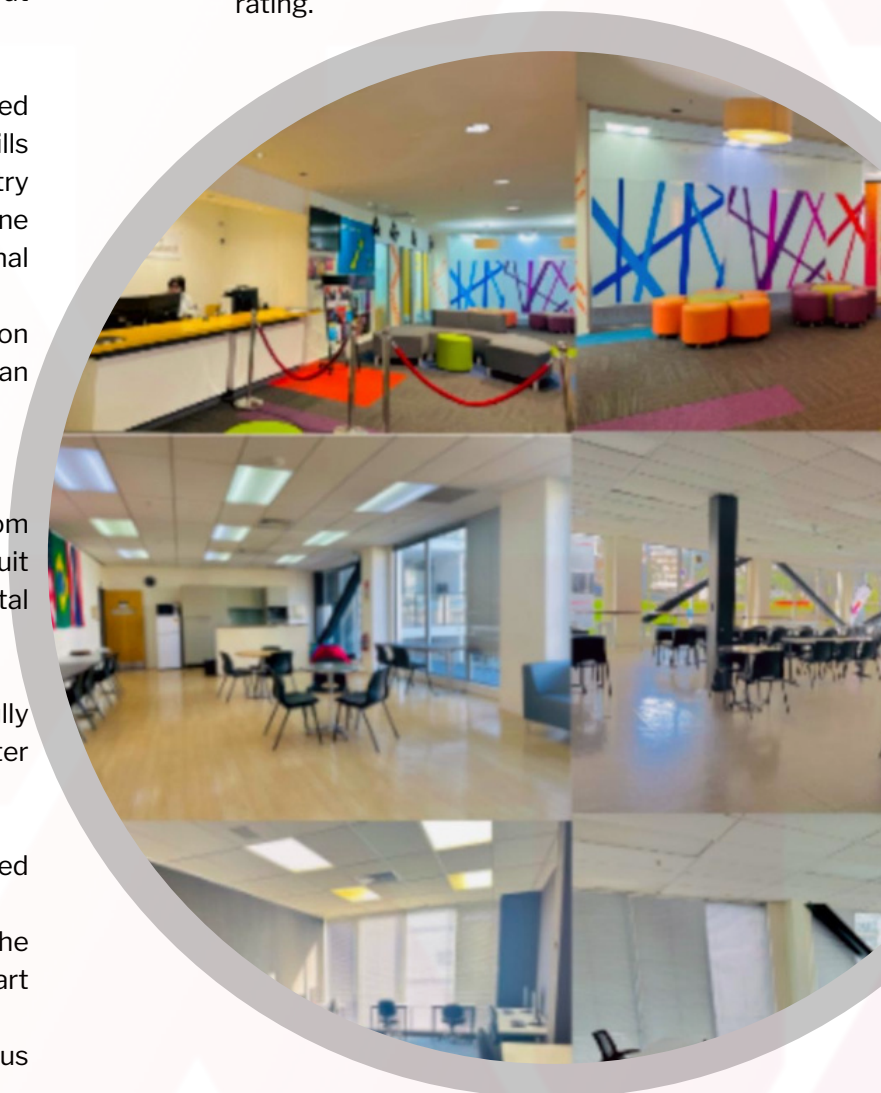
All students undergo a full week of orientation prior to course start and include the activities and support we give at orientation. We expand on more about the student services, facilities and highlight key factors and advantages that a student could use during their study at ATMC NZ including,

- A purpose built & customised production rooms for skills preparation, competitive industry preparation, project work, capstone completion, Media and Educational Agents
- Staffs who are there for every reason that students require and with an extended 24/7 support
- Pastoral care and support
- Budgeting and financial support
- In-House film studio, cinema room production room and a purpose built editing suites for our film and digital media departments
- café and prayer room facilities
- Large sunny classrooms, fully resourced library facility, computer rooms and student break out areas
- Compulsory Capstone project
- Industry Experience & recognised faculty to train students.
- Study, Work, Intern and Live in the Auckland CBD (Campus at the Heart of Auckland City)
- Within walking distance of campus [Transport facilities]

We are a New Zealand Qualifications Authority (NZQA) registered Private Training Establishment (PTE) (MOE Number: 9188). As a tertiary education provider, we are also a signatory to the Education (Pastoral Care of Tertiary and International Learners) Code of Practice 2021. Information on the code of practice can be found on the NZQA website

As a new provider, ATMC NZ currently does not hold an NZQA Category rating.

06





EVERYTHING YOU NEED

THE RIGHT TOOLS



FILM STUDIO



PRAYER ROOM



STUDENTS CAFE



PRODUCTION & MEDIA FACILITY



DEDICATED LABS



DEDICATED SUPPORT



STUDENTS KITCHEN



2024 PROSPECTUS Aotearoa New Zealand University

COURSES at ATMC AOTEAROA NEW ZEALAND

At ATMC our aim is to provide you with practical, experienced-based training and development and to prepare you for a meaningful and successful career.

We do this by offering a suite of programmes which reflect current industry practice and providing you with the ability to apply and practice what you learn using real case studies and examples.

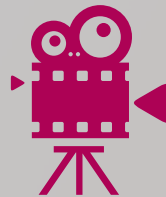
Our programmes are delivered by facilitators with industry, teaching and research experience and who are passionate about making a positive difference in the lives of their students. In 2024 ATMC NZ will be offering five programmes.



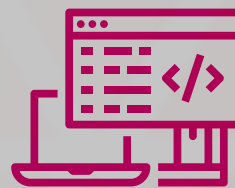
BACHELOR OF
APPLIED
MANAGEMENT



BACHELOR OF
APPLIED ARTS
DIGITAL MEDIA
PRODUCTION



BACHELOR OF
APPLIED ARTS
FILM
PRODUCTION



DIPLOMA IN
SOFTWARE
DEVELOPMENT [L7]



DIPLOMA IN
MANAGEMENT
[HEALTH CARE] L7



BACHELORS OF APPLIED MANAGEMENT

Intakes

4th March 2024

22nd July 2024

Offshore - International Student Fees:
(fees in NZD and incl of GST and all costs)

- First Year \$19,665
 - Second year \$16,665
 - Third Year \$14,665
-



BACHELOR OF APPLIED MANAGEMENT

The Bachelor of Applied Management focuses on developing not only your theoretical knowledge but the soft skills that make for a great leader.

These include critical thinking, people management and communication to name a few. You also get to choose between an internship, an industry-based capstone project or a research project to complete your degree. Depending on your choice you get to put your knowledge into practice or develop the research skills needed to move onto further study.

What you will learn:

Made up of 360 credits taught over three years and finishing with your choice of a research project, capstone project based in industry or a 16 week industry internship you get to study standard business subjects including Strategic Management and Marketing alongside arts-focused subjects such as Philosophy and Psychology

Study pathways:

Once you've graduated you can apply to enter a postgraduate level programme.

Entry requirements:

- Applicants must be 18 years or over and have:
 - NCEA 3 or 42 credits at level 3 with 14 credits in each of three subjects on the approved list and 10 credits at level 2 in reading and writing (in English or Māori) and a minimum of 10 credits at level 1 in numeracy
- or
- **Equivalent:** International applicants who have not undertaken secondary education in New Zealand must provide evidence of English language proficiency.
 - English language requirements IELTS overall academic score of 6 with no band width score lower than 5.5 or equivalent issued within the last two years

Programme Duration:

- [Full time study] This programme is taught over 3 years with two 18-week semesters each year with a total duration 3 years.

Employment opportunities:

- Graduates of this programme will find opportunities for employment across a wide range of industries both in New Zealand and globally.
- Graduates will be able to consider entry level roles in operations, marketing, project management, customer services and business development.

Study pathway opportunities:

Graduates of this programme may also seek postgraduate level study pathways in other New Zealand education providers.

Level 5 [YEAR 1]

- Philosophy and Psychology
- Critical Thinking and Problem Solving
- Intercultural Communication and Organisational Behaviour
- New Enterprise Development and Small Business

Level 6 [YEAR 2]

- Anthropology
- Sociology and Media Studies
- Strategic Management and Marketing
- Sustainable Practice and Operations Management

Level 7 [YEAR 3]

- Managing Projects
- Innovation and Entrepreneurship
- Management Capstone Project or
- Management Capstone Internship or
- Management Capstone Research Project



SAMIRA KAKH

Welcome to the Bachelor's in Applied Management Program at ATMC New Zealand! I will take you through a dynamic curriculum designed to blend theory with real-world applications. The programme helps you unleash your potential, develop critical skills, and prepare for leadership roles in diverse industries. Join us in shaping your academic journey for a successful future!

COURSE UNIQUENESS

Choice between a capstone project or an internship with a real organisation, or a pure research project.
Includes real-life case studies
Group Projects

CAREER PROGRESSION GRADUATE PROFILE OUTCOMES

When you complete the Bachelor of Applied Management you are equipped to work in a range of business-focused roles including:

Career outcomes:

Possible career outcomes include:

- Operations
- Project management
- Marketing
- Business management
- Business development and,
- Customer service

INTAKE & FEES

Offshore Applicant: If the potential student applicant is out of New Zealand

Offshore - International Student Fees:
(fees in NZD and incl of GST and all costs)

- First Year \$19,665
- Second year \$16,665
- Third Year \$14,665

Intakes

- 4th March 2024
- 22nd July 2024



BACHELOR OF APPLIED ARTS FILM PRODUCTION

Intakes

4th March 2024

22nd July 2024

Offshore - International Student Fees:
(fees in NZD and incl of GST and all costs)

- First Year \$19,665
 - Second year \$16,665
 - Third Year \$14,665
-



BACHELOR OF APPLIED ARTS FILM PRODUCTION

This programme will develop your ability to initiate, manage and implement sustainable and financially viable film production projects from ideation to delivery. It focusses on both film production skills including cinematography, pre-production, sound editing, script writing and storytelling in addition to knowledge of humanities.

This programme will enable you to develop the communication and collaboration skills required to lead teams, identify stakeholder needs, and provide solutions to complex problems relevant to film production.

What you will learn:

Made up of 360 credits taught over three years and finishing with your choice of a research project, capstone project based in industry or a 16 week industry internship.

Entry requirements:

- Applicants must be 18 years or over and have:
 - NCEA 3 or 42 credits at level 3 with 14 credits in each of three subjects on the approved list and 10 credits at level 2 in reading and writing (in English or Māori) and a minimum of 10 credits at level 1 in numeracy
- or

- **Equivalent:** International applicants who have not undertaken secondary education in New Zealand must provide evidence of English language proficiency.
- English language requirements IELTS overall academic score of 6 with no band width score lower than 5.5 or equivalent issued within the last two years

Programme Duration:

- [Full time study] This programme is taught over 3 years with two 18-week semesters each year with a total duration 3 years.

Employment opportunities:

- Graduates of this programme will find opportunities for employment both in New Zealand and globally and will be able to consider entry-level roles in visual and cinematic language, preproduction, filming, editing and post-production.

Study pathway opportunities:

Graduates of this programme may also seek postgraduate level study pathways in other New Zealand education providers.

Level 5 [YEAR 1]

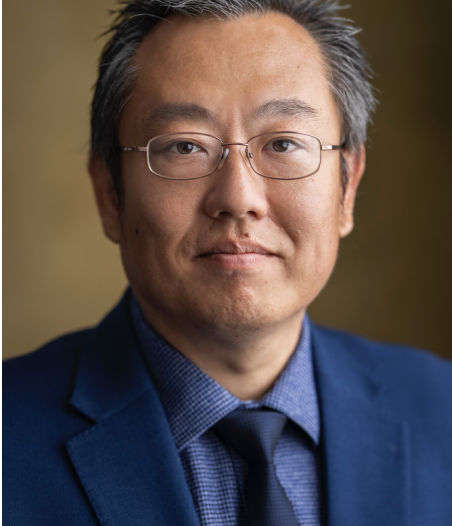
- Philosophy and Psychology
- Critical Thinking and Problem Solving
- Art History and Constructing Digital Images
- Production Project

Level 6 [YEAR 2]

- Anthropology
- Sociology and Media Studies
- Cinematic Storytelling I
- Cinematic Storytelling II

Level 7 [YEAR 3]

- Project Pre-production
 - Project Ideation
 - Film Production Capstone Project
- OR
- Film/Digital Media Capstone Internship



GABRIEL CHAO REN

Welcome to a transformative journey in the realm of creativity! Our Bachelor's in Applied Arts and Film Production programme at ATMC NZ is your gateway to unlocking the captivating world of cinematic artistry. Immerse yourself in hands-on experiences, learn from industry experts, and harness your creative genius. From script to screen, we cultivate your skills in film production, visual storytelling, and the technical nuances of the industry. Join us in crafting narratives that resonate globally, as we prepare you for an exhilarating career in the dynamic landscape of film and applied arts.

COURSE UNIQUENESS

- Taught by lecturers with film industry experience
- Learn practical, hands-on skills
- Choice between an internship in the film industry or a film production capstone project
- Develop a portfolio of work to show prospective employers

CAREER PROGRESSION GRADUATE PROFILE OUTCOMES

Opportunities for graduates of the film production specialisation exist in the digital media industry, film industry, and TV Industry or in business that require video content as part of their communication strategies.

Possible career outcomes include:

- Proficient digital media producers skilled in latest film technologies.
- Culturally aware artists and designers create meaningful audience experiences.
- Confident professionals collaborate with clients, meeting diverse needs.
- Visual storytellers pioneering new narrative languages for impactful messaging.
- Technical experts in preproduction, filming, editing, and post-production for entry-level employment.

INTAKE & FEES

Offshore Applicant: If the potential student applicant is out of New Zealand

Offshore - International Student Fees:

(fees in NZD and incl of GST and all costs)

- First Year \$19,665
- Second year \$16,665
- Third Year \$14,665

Intakes

- 4th March 2024
- 22nd July 2024





BACHELOR OF APPLIED ARTS DIGITAL MEDIA PRODUCTION

Intakes

4th March 2024

22nd July 2024

Offshore - International Student Fees:
(fees in NZD and incl of GST and all costs)

First Year \$19,665

Second year \$16,665

Third Year \$14,665



BACHELOR OF APPLIED ARTS [DIGITAL MEDIA PRODUCTION]

This programme will develop your ability to initiate, manage and implement sustainable and financially viable digital media projects from ideation to delivery. It focusses on both digital media production skills including animation, VFX digital imaging in addition to knowledge of humanities.

This programme will enable you to develop the communication and collaboration skills required to lead teams, identify stakeholder needs, and provide solutions to complex problems relevant to digital media production.

What you will learn:

Made up of 360 credits taught over three years and finishing with your choice of a research project, capstone project based in industry or a 16 week industry internship.

Entry requirements:

- Applicants must be 18 years or over and have:
 - NCEA 3 or 42 credits at level 3 with 14 credits in each of three subjects on the approved list and 10 credits at level 2 in reading and writing (in English or Māori) and a minimum of 10 credits at level 1 in numeracy
- or
- **Equivalent:** International applicants who have not undertaken secondary education in New Zealand must provide evidence of English language proficiency.
 - English language requirements IELTS overall academic score of 6 with no band width score lower than 5.5 or equivalent issued within the last two years

Programme Duration:

- [Full time study] This programme is taught over 3 years with two 18-week semesters each year with a total duration 3 years.

Employment opportunities:

- Graduates of this programme will find opportunities for employment both in New Zealand and globally and will be able to consider entry-level roles in visual and cinematic language, preproduction, filming, editing and post-production.

Study pathway opportunities:

Graduates of this programme may also seek postgraduate level study pathways in other New Zealand education providers.

Level 5 [YEAR 1]

- Philosophy and Psychology
- Critical Thinking and Problem Solving
- Art History and Constructing Digital Images
- Production Project

Level 6 [YEAR 2]

- Anthropology
- Sociology and Media Studies
- Digital Image Creation I
- Digital Image Creation II

Level 7 [YEAR 3]

- Project Pre-production
 - Project Ideation
 - Digital Media Capstone Project
- OR
- Film/Digital Media Capstone Internship



KAVITHA JAGANATHAN

Our Bachelor's in Applied Arts and Digital Media programme is designed for aspiring artists and digital enthusiasts. Immerse yourself in a dynamic curriculum that blends traditional art forms with cutting-edge digital technologies.

From graphic design to interactive media, our programme nurtures your creative talents and equips you with the skills to thrive in the ever-evolving digital landscape. Join us on a journey where your artistic vision meets the digital frontier, shaping you into a versatile and sought-after professional in the world of applied arts and digital media. Let your creativity soar!

COURSE UNIQUENESS

- Taught by lecturers with film industry experience
- Learn practical, hands-on skills
- Choice between an internship in the film industry or a film production capstone project
- Develop a portfolio of work to show prospective employers

CAREER PROGRESSION GRADUATE PROFILE OUTCOMES

Graduates of this programme will find opportunities for employment both in New Zealand and globally and will be able to consider entry-level roles in motion graphic design, visual effects, animation, and storytelling.

Possible career outcomes include:

- Digital Media Producer
- Graphic
- Video Editor
- Multimedia Specialist
- Social Media Manager
- Content Creator
- UX/UI Designer
- Digital Marketing Specialist
- Project Manager
- Media Researcher

INTAKE & FEES

Offshore Applicant: If the potential student applicant is out of New Zealand

Offshore - International Student Fees:
(fees in NZD and incl of GST and all costs)

- First Year \$19,665
- Second year \$16,665
- Third Year \$14,665

Intakes

- 4th March 2024
- 22nd July 2024

DIPLOMA IN SOFTWARE DEVELOPMENT [LEVEL 7]

Intakes in 2024

- 4th March 2024
- 20th May 2024
- 22nd July 2024
- 7th October 2024

International Student Fees:
(fees in NZD and incl of GST and all costs)

Total Fees: 14,665.00



DIPLOMA IN SOFTWARE DEVELOPMENT [LEVEL 7]

Do you want to enhance your existing knowledge and skills in order to develop application programs? Are you interested in people-centered software applications?

If so the Diploma in Software Development is a great way to ensure that you have the skills and knowledge to meet contemporary and future workplace demands for flexible software developers and collaborators.

This programme will develop your existing knowledge and skills to develop application programs on various platforms. It focuses on contemporary and future workplace demands for software developers and collaborators who create people-centred software applications.

Developed to teach you the skills to design and develop databases and analyse business information the Diploma will help you into a career as a developer, programmer, or software engineer.

What you will learn: Made up of 120 credits taught over 32 weeks you will study:

- Web and Cloud Application Development
- Business Intelligence and Databases
- Application Development Project/Capstone Project

The Application Development Project (Capstone Project) is a 16-week project developed by you and undertaken in conjunction with industry, or as an industry-based development project. This project gives you real-world experience and helps ensure that you create industry networks and a real application that you can show potential employers before you graduate.

Entry requirements

- Applicants must have attained the age of 20 years on or before the first day of the term and provided sufficient evidence of the aptitude or appropriate work or other life experience that would indicate a successful outcome in the qualification in addition to:
- A recognised degree in an aligned discipline
- or A Diploma in Computing, Level 6 or equivalent
- or A professional qualification
- or The ability to demonstrate competencies equivalent to 1, 2 or 3

and {International Students}

- English language requirements IELTS overall academic score of 6 with no band width score lower than 5.5 or equivalent issued within the last two years

Programme Duration:

[Full time study] This programme is taught over four, 8-week terms (42 weeks including holidays)

Employment opportunities:

- Software development graduates can work in database administration, project management, and software and web development. They can work as mobile app developers, systems analysts, or IT consultants in tech, banking, and healthcare. Demand for talented developers provides a variety of profitable careers worldwide.

Study pathway opportunities:

Graduates of this programme may also seek postgraduate level study pathways in other New Zealand education providers.

Level 7 [YEAR 3]

- Web and Cloud Application Development (30 credits)
- Business Intelligence and Database (30 credits)
- Plus
- Application Development Project (60 credits)



RASHMI MUNJAL

Join into a cutting-edge curriculum and gain hands-on experience through real-time projects, elevating your skills. Our programme is designed to open doors to exciting job prospects, providing a solid foundation for a successful career in software development. Join us and become a part of the innovation that shapes the future of the tech industry.

The Course graduates from technical disciplines for rapid and successful software development careers while also aiming to foster multidisciplinary software development learning experiences. The diploma programme graduates are equipped and talented students with attractive job options in high-demand fields.

COURSE UNIQUENESS

Develop a software application tailored for a genuine business or organization based in New Zealand. The program emphasizes practical, hands-on learning experiences. You'll be guided by industry-experienced instructors who are well-versed in current and pertinent technologies. Engage in industry-aligned projects to gain valuable real-world skills.

CAREER PROGRESSION GRADUATE PROFILE OUTCOMES

Diploma in Software Development (Level 7) (DipSD7) stresses emotional intelligence, which graduates sometimes lack. While vocational training provides job-related skills, people-centered skills give graduates a national and global edge.

Possible career outcomes include:

- Database Administrator (DBA)
- Business Intelligence Analyst
- Data Analyst
- Data Engineer
- Database Developer
- Data Warehouse Analyst
- Web Developer
- Software Engineer / Developer
- Systems Analyst
- IT Consultant
- Network Administrator
- Project Manager
- Technical Writer

INTAKE & FEES

Offshore Applicant: If the potential student applicant is out of New Zealand

Offshore - International Student Fees:
(fees in NZD and incl of GST and all costs)
Total Fees: \$14,665

Intakes in 2024

- 4th March 2024
- 20th May 2024
- 22nd July 2024
- 7th October 2024

DIPLOMA IN MANAGEMENT [HEALTH CARE] [LEVEL 7]

Intakes in 2024

- 4th March 2024
- 20th May 2024
- 22nd July 2024
- 7th October 2024

International Student Fees:
(fees in NZD and incl of GST and all costs)

Total Fees: 14,665.00



DIPLOMA IN MANAGEMENT [HEALTH CARE] [LEVEL 7]

Our Diploma in Management Health Care at ATMC NZ offers a comprehensive program tailored for aspiring healthcare professionals. Delve into the intricacies of healthcare administration, leadership, and policy. Gain practical insights through hands-on experiences and real-world case studies. Our industry-aligned curriculum ensures you graduate with the knowledge and skills necessary for success in healthcare management. Join us to embark on a journey of learning and make a positive impact on the healthcare landscape. Your future in healthcare management starts here!

Students who want to work as healthcare managers and health workers who work in management, policy, or analysis roles and want to learn more about how to run facilities for the elderly should take this course. As students of this course, they will build the skills they need to do their jobs as managers in situations that are related to their past experience and education.

What you will learn: Made up of 120 credits you will study:

- Health Services Management and Policy,
- Support Planning for Geriatric and Mental Health Conditions and,
- Quality and Risk Management

A Related Learning Experience (Industry Placement).

Taken in your final term of study the 8 week Industry Placements are selected on the potential to add to your learning experience and they give you valuable hands-on experience that complements the theoretical skills you learn.

Study pathways:

Once you've graduated you can apply to enter a postgraduate level program.

Entry requirements

- Applicants must have evidence of a tertiary qualification at level 6
 - or above in a health-related
 - or management field
- or
- Be able to demonstrate at least three years equivalent practical or professional experience in business, management, or a healthcare-related field.

[Special entry will be considered for extensive experience and / or other qualification.]

and additionally for {International Students}

- English language requirements IELTS overall academic score of 6 with no band width score lower than 5.5 or equivalent issued within the last two years

Programme Duration:

[Full time study] This programme is taught over four, 8-week terms (42 weeks including holidays)

Employment opportunities:

- Graduates of this programme may able to gain employment in a range of managerial or leadership roles in either domestic or international healthcare businesses and organisations.

Study pathway opportunities:

Graduates of this programme may also seek postgraduate level study pathways in other New Zealand education providers.

Level 7 [YEAR 3]

- Health Services Management and Policy
- Support Planning for Geriatric and Mental Health Conditions
- Quality and Risk Management
- Term four: Related Learning Experience: placement in a health care facility of the students choice.



SADIA FARZANA

The purpose of our programme is to provide graduates with the ability to analyse the structure of the health services industry and compare practices in New Zealand and throughout the world.

Our programme is designed to bring about outcomes that are goal-oriented. It is important to evaluate both domestic and foreign issues that will have an impact on the future expansion of health services and to provide management solutions. Conduct an in-depth analysis of the long-term management prospects in the sector in order to determine whether or not it is feasible.

In the context of New Zealand, sociological topics and theories will be investigated with emphasis. Applying communication and ethics frameworks to better professional practice within the New Zealand setting.

COURSE UNIQUENESS

Students who want to work as healthcare managers and health workers who work in management, policy, or analysis roles and want to learn more about how to run facilities for the elderly should take this course. As students of this course, they will build the skills they need to do their jobs as managers in situations that are related to their past experience and education.

CAREER PROGRESSION GRADUATE PROFILE OUTCOMES

Graduates can demonstrate their understanding of technical and theoretical management concepts by applying them in real-life situations. They can also analyse health issues or management needs and devise a solution that addresses stakeholders' theoretical and practical needs. Graduates are able to use theoretical ideas and/or technical or creative abilities in easy and hard situations, such as ethical, long-term, and community-based concerns.

Possible career outcomes include:

- Aged Care Unit Worker
- Mental health worker,
- Career at dementia care
- Aged Care Unit Manager
- Healthcare Unit Worker
- Healthcare Unit Manager
- Residential Services Worker
- Residential Services Manager
- Day Service Assistant Manager
- Day Service Managers
- Health and Welfare Services Manager

INTAKE & FEES

Offshore Applicant: If the potential student applicant is out of New Zealand

Offshore - International Student Fees:
(fees in NZD and incl of GST and all costs)
Total Fees: \$14,665

Intakes in 2024

- 4th March 2024
- 20th May 2024
- 22nd July 2024
- 7th October 2024

HOW TO APPLY TO STUDY AT ATMC NZ [INTERNATIONAL]

1. Choose your programme and check if you meet the academic and English language entry requirements.
2. Create a statement of purpose and apply for an offer of place specific to your study
3. Once your application is complete and we have received all necessary documentation from you or your agent, it will be assessed by ATMC NZ staff and an offer of place will be accordingly issued.
4. Ensure your financial preparation towards the course selected is prepared and readily available.
5. Immigration New Zealand expects every student to allocate 20,000NZD/ Year towards living cost, do ensure that this readily available towards your study period.
6. Apply with the registered list of agents for ATMC NZ in your country or apply directly if you are already in New Zealand at the time of the application.
7. Apply for a student visa at Immigration New Zealand (INZ) Website or through your education agency.
8. If your application is successful ATMC NZ will issue you an offer of place. Accept your offer of place by following the instructions in your offer letter.
9. Once your Approval in Principle (AIP) is issued by INZ, you will need to pay your tuition fees, then obtain health and travel insurance through ATMC NZ, before leaving your country.

HOW TO APPLY TO STUDY AT ATMC NZ [DOMESTIC]

1. Choose your programme and check if you meet the academic and English language entry requirements.
2. Create a statement of purpose and apply for an offer of place specific to your study
3. Once your application is complete and we have received all necessary documentation including NCEA results, it will be assessed by ATMC NZ staff and accordingly an offer of place will be issued.
4. Study Link and queries specifically related to study allowance and their details to be queried and sorted (ATMCNZ Staff can guide you on the preparation of documents needed)
5. If going through Study Link: you will need to organise the payment of your tuition fees and relevant costs
6. Or, The tuition fees and relevant costs can be directly paid to the Public Trust A/c of ATMC NZ and proceed towards the date of Orientation.

APPLYING THROUGH STUDY LINK

Both student loans and allowances are made available by StudyLink, which is also responsible for determining whether or not you are qualified to receive any of these financing options.

In order to qualify for student loans and allowances, you need to be either of the following in order to be eligible for a student loan or a allowance.

- **A** citizen of New Zealand, or a person who is ordinarily residing in New Zealand
- **and** has either been living in New Zealand for at least three years
- **and** has held a residence class visa for three years,
- **or** another person who is a refugee protected person,
- **or** someone who has been sponsored into New Zealand by a member of your family who was a refugee **or** protected person at the time that you were sponsored.

Should you have any more enquiries, please get in touch with StudyLink on <https://www.studylink.govt.nz/>

Or

- [0800 88 99 00](tel:0800889900)
- Monday to Friday - 7am to 6pm
- Saturday - 8am to 1pm

IMPORTANT INFORMATION

- In addition to your tuition fees, you will need to pay for textbooks and your personal expenses. If you enter New Zealand on a student visa, Immigration New Zealand requires you to have access to NZ\$20,000 in addition to your course fees for each year you will be studying in New Zealand, plus an additional NZ\$2,000 to cover a return ticket home.
- Full details of immigration requirements, advice on rights to employment in New Zealand while studying, and reporting requirements are available from Immigration New Zealand's website at www.immigration.govt.nz
- If you are applying for the first time to study in New Zealand, please refer to adequate information that could help in your decision making process:
<https://www.immigration.govt.nz/new-zealand-visas/preparing-a-visa-application/the-application-process/forms-guides-and-checklists>
- New Zealand Immigration provides options for students to work while studying. You can search for further information at: <https://www.immigration.govt.nz/new-zealand-visas/preparing-a-visa-application/education-quals-study/working-on-a-student-visa>
- ATMC NZ is a signatory of the NZ Pastoral care Code of Practice 2021, which requires all international students to have full and comprehensive medical and travel insurance. It is our responsibility under the Code of Practice to ensure that all enrolled international students have insurance cover. ATMC NZ can arrange compliant insurance cover that meets this requirement on payment of an additional charge. Full details are stated in the Student Handbook.

PROSPECTUS

2024

Level 1-4, 85 Airedale Street,
Auckland, 1010, New Zealand.
P.O. Box 7201: Victoria Street
West, Auckland 1142

Marketing Manager
E - Jayaraj.arulsamji@atmc.ac.nz
E - Welcome@atmc.ac.nz
P +64 (09) 309 5208
M +64 27 512 1985
W - www.atmc.ac.nz

 [atmcnz.international](https://www.facebook.com/atmcnz.international)

 [atmcnz.international](https://www.instagram.com/atmcnz.international)

